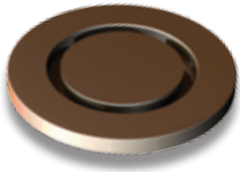


# Quick-Release — ISO Aluminum Flanges

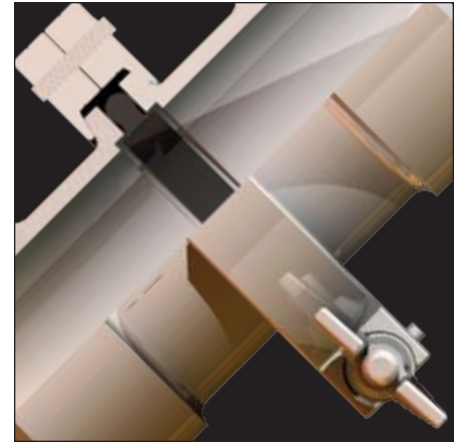


Quick-Release ISO Aluminum Flanges

Blank Off	BO Blank ISO Aluminum Flanges			
10—50mm	Metric	Inch	Description	Part No.



10	1/2	Blank flange	ISOAL-10-06
16	3/4	Blank flange	ISOAL-16-06
25	1	Blank flange	ISOAL-25-06
40	1-1/2	Blank flange	ISOAL-40-06
50	2	Blank flange	ISOAL-50-06



Cross section showing the Quick-Release flange, seal and clamp interface.

Hardware	HW ISO Flange Mounting Hardware			
10—50mm	Metric	Inch	Description	Part No.

Centering Ring	10	1/2	Al / Viton® O-ring	ISOHW-10-01
	16	3/4	Al / Viton® O-ring	ISOHW-16-01
	25	1	Al / Viton® O-ring	ISOHW-25-01
	40	1-1/2	Al / Viton® O-ring	ISOHW-40-01
	50	2	Al / Viton® O-ring	ISOHW-50-01



Clamp / Hinged	10	1/2	Al / Hinged with Wing Nut	ISOHW-10-02
	16	3/4	Al / Hinged with Wing Nut	ISOHW-16-02
	25	1	Al / Hinged with Wing Nut	ISOHW-25-02
	40	1-1/2	Al / Hinged with Wing Nut	ISOHW-40-02
	50	2	Al / Hinged with Wing Nut	ISOHW-50-02



Clamp / Bulkhead	10	1/2	Al / Bulkhead with 6-Bolts	ISOHW-10-03
	16	3/4	Al / Bulkhead with 6-Bolts	ISOHW-16-03
	25	1	Al / Bulkhead with 6-Bolts	ISOHW-25-03
	40	1-1/2	Al / Bulkhead with 6-Bolts	ISOHW-40-03
	50	2	Al / Bulkhead with 8-Bolts	ISOHW-50-03



Bulkhead clamp kits are supplied with 10-32UNF, 5/8 inch length socket-head bolts and mating washers in specified quantities. ISO 10, 16, 25, 40 and 50 clamp bolt-holes are equally spaced on 1.50, 1.50, 1.89, 2.44 and 3.25 inch bolt circles respectively. Note that ISO 50 clamp is fitted with eight (8) bolt-holes.