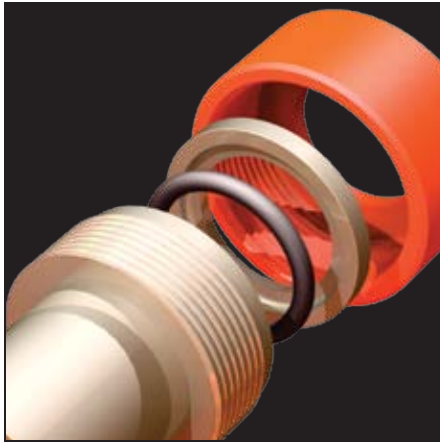


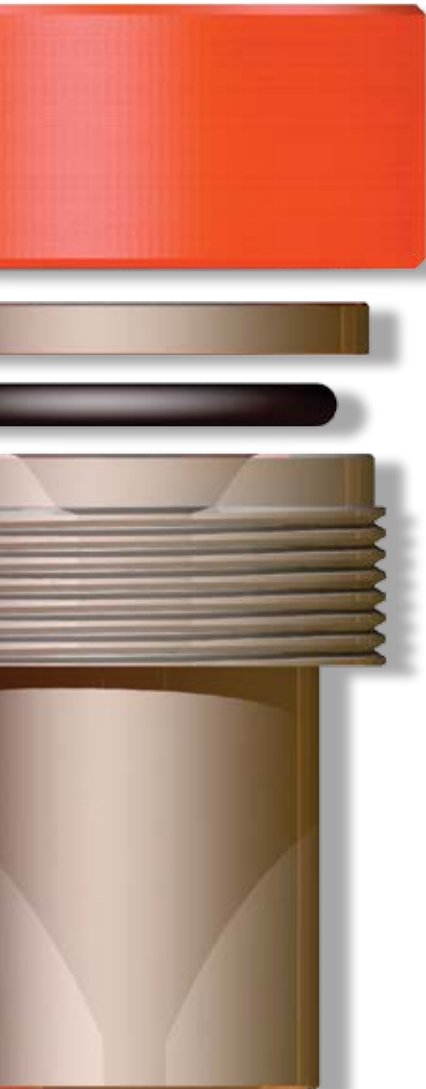
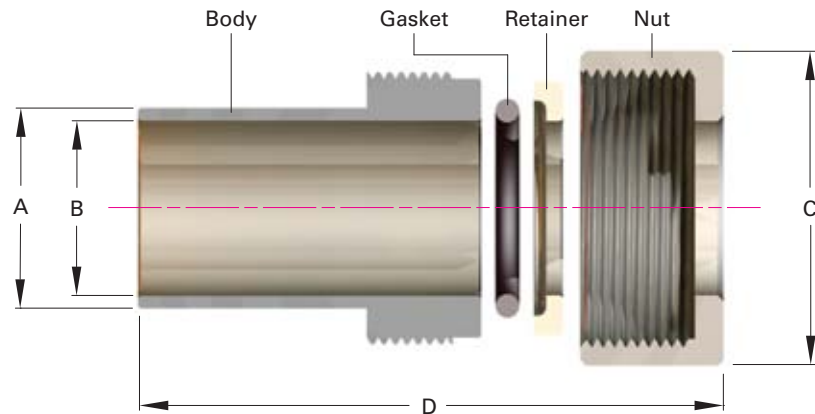
Atlas Quick-Disconnect Fittings

Atlas Quick Disconnect Aluminum Fittings



Atlas Quick-Disconnect fittings are the lighter and more economical solution for fast vacuum tube hookup.

Atlas Quick-Disconnect fittings are made of 6061-T6 aluminum and available for seventeen US standard tube sizes from 1/16 up to 2 inch diameters. Fittings are comprised of four basic parts... a body, gasket, retainer and nut. Standard gasket material is a Viton® elastomer, which is capable of sustained operation at temperatures to 150°C. With 1/3 the weight of competing stainless steel parts, Atlas Quick-Disconnect fittings are the light and economical alternative. Quick-Disconnect fittings are quick and easy means of connecting tubular vacuum components such as feedthroughs, gauges, glass tubing, etc.



Quick Disconnect		QD Atlas Aluminum Quick Disconnect Fittings				
Tube Size	Thread	A	B	C	D	Part No.
1/16	.375-20	.375	.07	1/2	1.31	QDAL-0063
1/8	.375-20	.375	.13	1/2	1.31	QDAL-0125
3/16	.500-20	.375	.19	5/8	1.31	QDAL-0188
1/4	.500-20	.375	.26	5/8	1.31	QDAL-0250
5/16	.688-20	.500	.32	7/8	1.31	QDAL-0313
3/8	.688-20	.500	.38	7/8	1.31	QDAL-0375
1/2	.750-20	.625	.51	7/8	1.38	QDAL-0500
5/8	1-20	.750	.63	1-3/16	1.50	QDAL-0625
3/4	1.188-20	.875	.76	1-3/8	1.63	QDAL-0750
7/8	1.25-20	1.00	.88	1-3/8	1.63	QDAL-0875
1	1.375-20	1.125	1.01	1-5/8	1.88	QDAL-1000
1-1/8	1.625-20	1.25	1.13	1-7/8	1.88	QDAL-1125
1-1/4	1.688-20	1.50	1.26	1-7/8	2	QDAL-1250
1-3/8	1.812-20	1.625	1.39	2	2.13	QDAL-1375
1-1/2	2-20	1.75	1.51	2-1/4	2.25	QDAL-1500
1-5/8	2.125-20	1.875	1.63	2-3/8	2.25	QDAL-1625
2	2.5-20	2.25	2.01	2-3/4	2.25	QDAL-2000